

NORTHERN TERRITORY – ARNHEM LAND & KAKADU NATIONAL PARK

5-days / 4-nights small group guided touring with quality safari tent accommodation



Explore the remote beauty of the Top End with a touch of style on a safari experience of one of Australia's extraordinarily diverse habitats. Our small group guided tour offers a 'down to earth' yet attentive level of service; an appreciation of the finer details and most importantly a team of hosts and guides who are passionate about Australia's environment, its wildlife and culture. Enjoy a unique hospitality and stay at a remote safari camp which does not purport to be a 5-star room in the bush but offers a style and experience that is utterly exclusive, rustically chic and totally in tune with the surrounding country.

Around 100km east of Darwin with access by car or charter plane, our private safari lodge and camp is located on the edge of the Mary River floodplains. The 303km² coastal pastoral property is near Point Stuart in the Mary River Region on the edge of Kakadu National Park. The camp is surrounded by a variety of habitats including vast river frontage, coastal flood plains, savannah woodland and paperbark swamps and is home to prolific bird life and other fauna. Morning is heralded by the call of magpie geese and at night the only sounds are the chorus of the Australian bush, the croaking of frogs, barking owls and the occasional howl of a dingo.

Our guided safari activities take advantage of the cooler mornings and late afternoons when the day is at its most comfortable, the light is at its best and the wildlife is most active. The Top End weather is dominated by a tropical monsoon with distinct seasons and so we operate in the months best suited to safari activities.

Departs: 1st March – 31st October 2022, 1st March – 31st March 2023

Arnhem Land Safari Experience 5 days/4 nights, cost from:	\$3585 per person, twin-share
Kakadu 1 Day Private Tour during your stay, cost from:	\$1800 per person (minimum of 2 people)
Mid/High Season supplements from:	\$1195 to \$1675 per person (March to August)
Arrival/Departure flights from/back to Darwin from:	\$650 per aircraft one way (up to 4 people)
Single supplement available on request	



Call OUTDOOR TRAVEL on 1800 331 582 for details or reservations



Accommodation: Bamurru Plains Lodge (Bamurru means magpie geese in the local Aboriginal dialect) is in an exclusive safari lodge set amongst wild palms and twisting trees on the edge of the Mary River floodplain. Offering a dining deck for chef-prepared meals showcasing local ingredients, a wet edge pool to cool off in the heat of the day and a lounging deck with a well-stocked library, perfect for watching the wildlife graze through the lodge. Guest are accommodated in private king or twin safari tents with spacious ensuite bathroom complete with toiletries, robes, towels, tight weave mesh screens on all sides of your bed, ceiling fans, cold water thermos, and binoculars. Air-conditioning is available at extra cost. Most of the power generation is solar and there is no mobile phone coverage or internet, so you will be off grid and have the luxury to completely relax.

Arnhem Land Safari Experience Includes: 4 nights in a comfortable king or twin safari bungalow with ensuite; all meals; bar drinks; safari vehicles; activities including airboat safaris, safari drives, sunset river cruises, wilderness walks and quad bike safaris, expert knowledgeable guides with a satellite phone, navigation aid, first aid kit, flora and fauna guides.

Optional: Kakadu National Park 1 Day Private Tour: This comes highly recommended as a *'must-do'* by our past clients. This private tour will take place during your stay at Bamurru Plains, replacing one of the safari days. Includes: Kakadu NP entry fee, Guluyambi Cruise, Nadab floodplain, Aboriginal rock art at Ubirr, lunch & drinks, return private charter flights departing Bamurru airstrip at 7.30am, arriving back at 5.00pm in time to freshen up before canape service ahead of dinner. Please request when you make your booking.

Suggested itinerary:

Day 1: Flight from Darwin (optional), arrive at the Lodge, Welcome & Safari

If you have booked the air transfers, depart Darwin Airport at 1.30pm on your private scenic charter flight, arriving at Bamurru Plains at 2.00pm. Or make your own way by road (about 3 hours drive from Darwin), planning to arrive at the lodge around 2.00pm.

Days 2 - Day 4: 3 Full Days of Safari Activities (or 2 full days + 1 day optional Kakadu NP Private tour)

Day 5: Tour ends at the homestead, Flight to Darwin (optional)

Enjoy a leisurely breakfast at the lodge before check out at 11.00am. If taking the return flight you will depart Bamurru airstrip at 11.30am and arrive at Darwin Airport at 12noon. Otherwise you are free for your departure and own onward driving arrangements.



Call OUTDOOR TRAVEL on 1800 331 582 for details or reservations



A Typical Day in Arnhem Land:

Wake up in the early dawn light to the morning chorus of magpie geese, before a 7.00am breakfast. Then, head off on one of the many safari choices on offer during your stay:

Depart by airboat for an exhilarating ride across the unique Top End floodplain with its profusion of crocodiles, water buffalo, birds and other wildlife, waterlilies, lotus flowers, marsh grasses, unique vegetation and ever-changing waterways. Very early in the season fishing charters are popular and wild barramundi abound.

Explore the rugged and diverse landscapes of this region aboard a custom built safari vehicle designed to offer uninterrupted vantage points to view and take photos of buffalo, brumbies, wallabies, birds and other wildlife, accompanied by the commentary of your experienced field guide.

Head out on a guided wilderness walk and along the way share the knowledge and connection of your field guides to the great Australian bush, which undergoes striking changes as it adapts to the Top End seasons.

For the more hands-on, navigate the floodplain savannah, monsoonal forests and dry open bushland and ride alongside buffalo and brumbies on a quad bike safari.

All morning activities return to the lodge before the heat of the day and in good time for a cool drink before lunch at around 12.30pm. Spend siesta time relaxing with a book in the cool shade, swimming in the horizon pool and watching the wildlife meander through the camp.

Later that afternoon, if you didn't do so earlier, take an open-topped 4WD safari, on the look-out for buffalo, wallabies, brumbies and wild boar as they move from open floodplains to overnight in the savannah woodland.

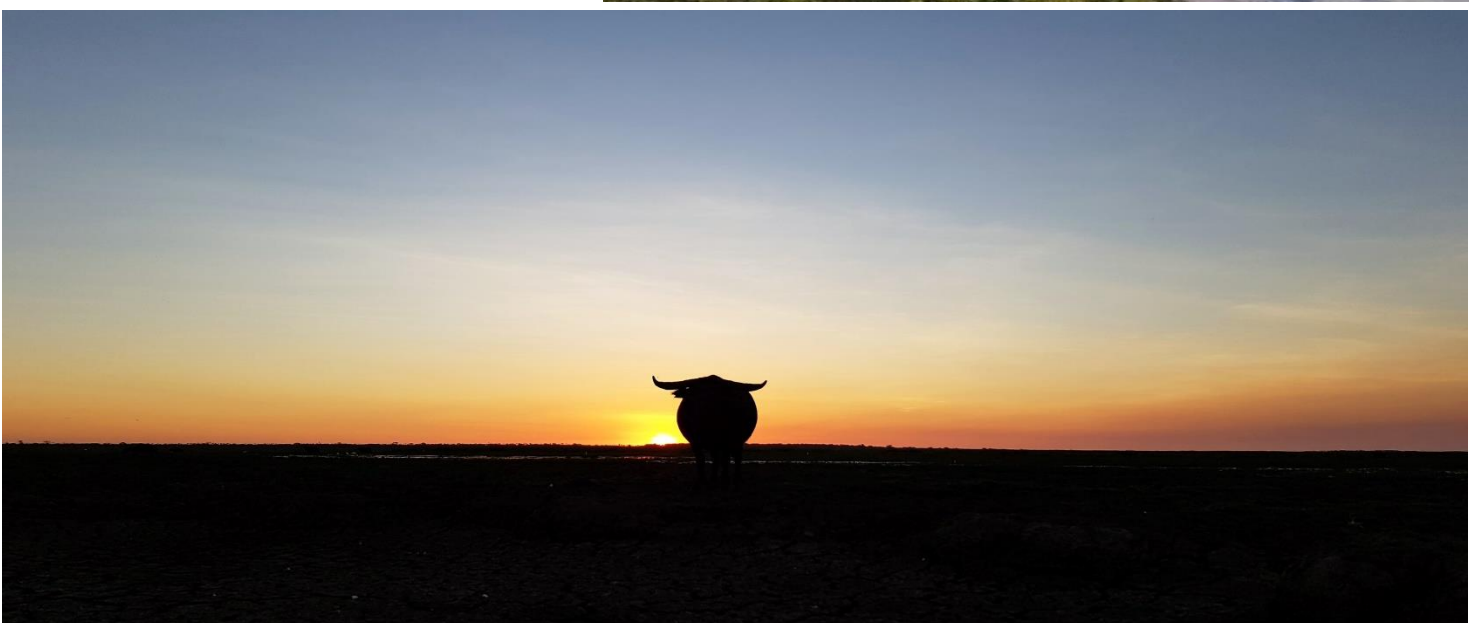
Or set off for a late afternoon river cruise through the meandering creek system. Relax under the shady boat canopy while your guides explain this unique, ever-changing environment which is home to many crocodiles and bird species. Enjoy sunset canapes aboard as the light fades.

Return to the lodge in time for sundowner drinks and around 7.00pm a long-table, chef-prepared dinner, showcasing local produce. Star-gazing on the pool-deck with after dinner drinks is also a popular pastime.

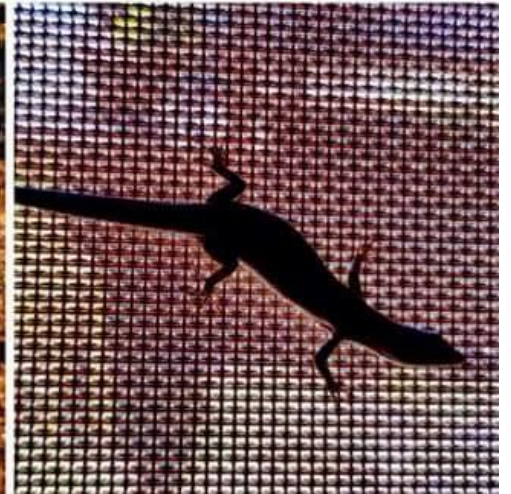
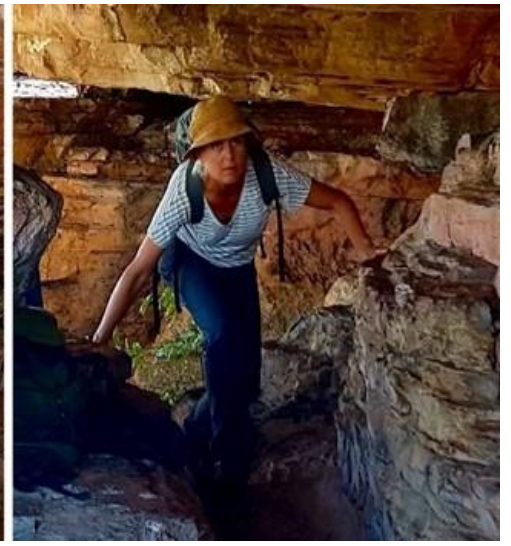
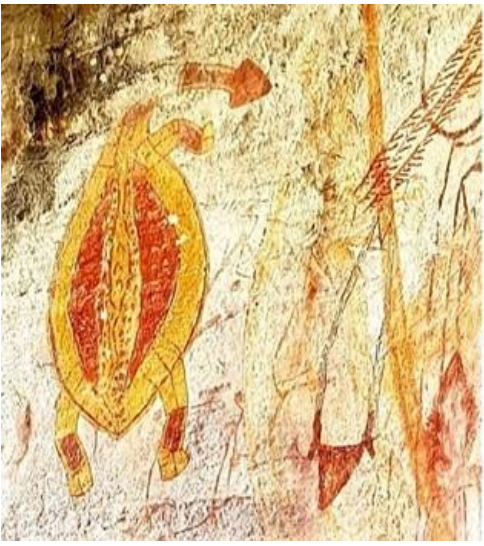


Contact Outdoor Travel for more details and reservations:

- Call Toll free 1800 331 582 or (03) 57551743 or Fax (03) 57501020
- Email: info@outdoortravel.com.au
- Web: <http://www.outdoortravel.com.au>
- Mail: Outdoor Travel Pty Ltd, PO Box 286, Bright, VIC 3741, Australia



Call OUTDOOR TRAVEL on 1800 331 582 for details or reservations



Call OUTDOOR TRAVEL on 1800 331 582 for details or reservations