

SCOTLAND – THE WEST HIGHLAND WAY

10-day / 9-night, moderate inn-to-inn trail, self guided walking



This remote and spectacular walking route through the West Highlands of Scotland takes you from Loch Lomond to one of the highest mountains in Britain, Ben Nevis. Explore exhilarating sea lochs, narrow mountain ridges and wooded glens, go scrambling beside fast flowing salmon streams with chance to see herds of Red deer and perhaps the rare Golden eagle.

There are heather strewn glens, jagged ridges, rocky outcrops and post-glacial features to explore. If Ben Nevis is too challenging there are other rewarding walks, through the Nevis Gorge to Steall Falls, or along the zigzags of the Devil’s Staircase built in 1751 after the Jacobite risings. For those who enjoy history Glen Coe has a dark past and the massacre of the MacDonalds by the English forces and a visit to the battlefield is very humbling.

Cost per person: \$1220 single or twin share Single room supplement on request.

Departs: Daily, all year round

Tour includes: 9-nights in comfortable guesthouses or hotels on or near the West Highland Way walking route with breakfast daily, route notes & maps, luggage transfers & local transport on walking days.

Where you'll stay - comfortable hotels, inns and guesthouses on or near the route. All accommodation includes breakfast. We offer en-suite rooms. On rare occasions when en-suite is not available, you will be consulted in advance. You may stay for one night or spend several nights at one guesthouse, and where necessary we will provide a pick up and drop off service for your day’s walk.

Please note: due to bespoke nature of our self-guided trails, your accommodation is booked specifically to meet your holiday requirements. As a result, this may differ from the accommodation outlined below. A full list of the hotels used on the holiday will be sent to you a couple of weeks prior to your holiday – here is an example of the standard that we typically use – but of course it may change:



Call OUTDOOR TRAVEL on 1800 331 582 for more details or reservations

Suggested Itinerary



Moderate walking 95 miles in total. 9 - 15 miles per day with a maximum daily ascent of 2,875ft.

Day 1: Arrival day.

Day 2: Milngavie to Drymen - The first section undulates through gentle countryside from Milngavie to Drymen, passing the Dumgoyach Standing Stones, and the Glengoyne Distillery en route. 12½ miles with 770 feet of ascent.

Day 3: Drymen to Rowardennan - Following forest tracks, paths and minor roads through gently rolling countryside, today's walk rewards us with stunning views of the surrounding hills, including Ben Lomond to the north, before skirting the shores of Loch Lomond. 16 miles with 2,500 feet of ascent.

Day 4: Rowardennan to Ardlui - A beautiful walk continuing along the banks of Loch Lomond before winding through countryside associated with the notorious outlaw Rob Roy MacGregor. The walk passes close by 'Rob Roy's Prison' and 'Rob Roy's Cave'. At the northeast shore we hail a ferry to take us across the loch, to Ardlui. 12½ miles with 1,500 feet of ascent.

Day 5: Ardlui to Crianlarich - A pleasant start to the day as we sail over the Loch to rejoin the West Highland Way. A gentle ascent up Glen Falloch takes us past the Falls of Falloch, and on to follow our route along General Wade's 18th century military road, to Crianlarich. 9 miles with 700 feet of ascent.

Day 6: Crianlarich to Bridge of Orchy - Continuing along the military road we head over the pass to be greeted by views of magnificent Beinn Dorain. Descending to the valley floor, we enjoy easy walking to Bridge of Orchy. 13 miles with 975 feet of ascent.

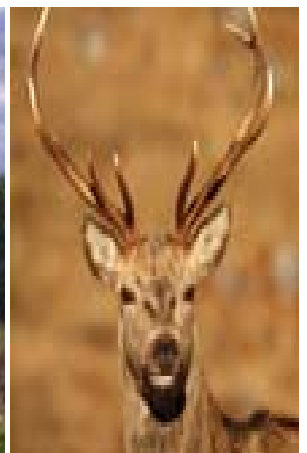
Day 7: Bridge of Orchy to Kingshouse - The open expanse of Rannoch Moor awaits. A landscape of wild, open moorland - scenery of heather, rocks and lochans. This lonely landscape, encircled by mountains, accompanies us until we reach Kingshouse, Scotland's oldest licensed inn. 12 miles with 1,000 feet of ascent.

Day 8: Kingshouse to Kinlochleven - Magnificent scenery to admire, with the imposing picture postcard mountain of Buchaille Etive Mor in view as we climb the "Devil's Staircase". From the Staircase summit, the highest point of the West Highland Way, we have excellent views of the Mamore Hills to the north, as well as hills to the south and east. Road walking now on our descent to Kinlochleven. 9 miles with 1,400 feet of ascent.

Day 9: Kinlochleven to Fort William - A steep but short climb out of Kinlochleven takes us on to Lairigmor. With magnificent mountains either side our walk makes a final ascent through forestry, to the hillside above Glen Nevis, for spectacular views of "The Ben", Britain's highest mountain. Continuing down the glen, we end our walk in Fort William. 15 miles with 2,875 feet of ascent.

Day 10: Depart

Tour ends after breakfast



Contact **OUTDOOR TRAVEL** or your travel agent for more details and reservations:

- Call Outdoor Travel Toll free on 1800 331 582 or (03) 57551743 or Fax (03) 57501020
- Email info@outdoortravel.com.au
- Web: <http://www.outdoortravel.com.au>
- Mail: Outdoor Travel Pty Ltd, PO Box 286, Bright, VIC 3741, Australia
- Travel Agent Licence No 31102