

ENGLAND – DARTMOOR, DEVON

8-day / 7-night one-hotel guided walking tour



Towering tors (hilltop rocky outcrops or peaks), sea cliffs, golden sandy beaches and atmospheric old fishing ports combine to offer one of Europe's most dramatic country parks. A guided walking holiday based high on the moor at Haytor is the ideal way to experience the sweeping expanse of the Dartmoor National Park yet close enough to explore the coastal beaches and cliffs of the glorious South Devon coast. Hidden valleys provide a woodland retreat for wildlife. Our base at Moorlands near Haytor with its connections to Agatha Christie gives access to all that make this area so special.

Walking Highlights:

- Ancient stone circles, clapper bridges and Bronze-Age villages
- Opportunities for more challenging hill walking through southern England's last great wilderness
- Easy reach of the South Devon coast, with its sandy beaches and cliff-top paths

Cost: AU\$1195 per person (twin share). Single room supplements \$120

Departs: 5, 12, 26 May, 2, 9, 16, 23, 30 June, 7, 14 July, 4, 18, 25 August, 1, 15, 22 September 2012

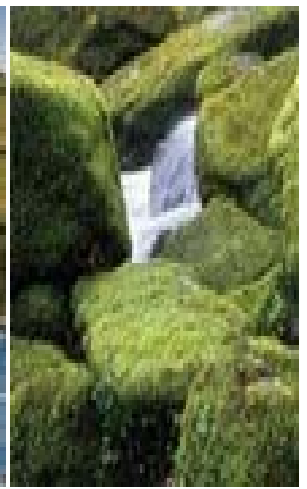
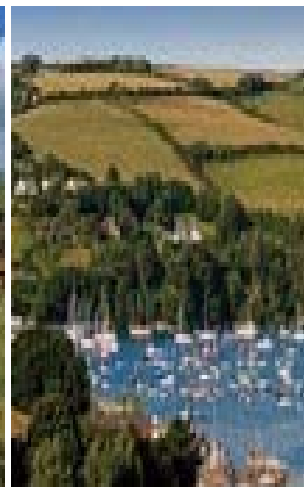
Tour includes: 7-nights in comfortable room with ensuite bathroom, full board (breakfast, picnic lunch & dinner) experienced walks leader, guided walks, transport with the walks & social activities in the evenings.

Not Included: Transport to/from the house, drinks and any personal expenses.

Accommodation: Moorlands is a fine Country House, situated high on the moor below the famous Haytor Rocks, one of Dartmoor's best-known landmarks. It was in this magnificent setting that Agatha Christie wrote her first book, *The Mysterious Affair at Styles*, in 1917. Moorlands has 32-bedrooms, all situated in the main building. The standard rooms offer comfortable accommodation and an en-suite bathroom with a toilet and shower or bath, tea and coffee making facilities, a clock radio & hairdryer. A limited number of premium rooms are available - with a surcharge – ask for details.



Call OUTDOOR TRAVEL on 1800 331 582 for details or reservations



Suggested itinerary: You will have a daily choice of either of these guided walking options



Easier Walks: 6 to 8 miles on mostly well-graded paths with some short, steep sections. Up to 1,200ft of ascent in a day.

Highlights include: The rolling hills surrounding Dartmoor offer a good variety of easier walks. Follow the wooded Teign Gorge to Castle Drogo or walk through tranquil valleys to the tiny village of Widecombe-in-the-Moor with its splendid church, dubbed the Cathedral of the Moor. Explore the many tors and viewpoints at Haytor, or visit the River Dart at Dartmouth with its castle and fine coastal walks.



Medium Walks: 7 to 10 miles with steady ascents / descents. Up to 1,720ft of ascent in a day.

Highlights include: Walks on the high moor through undulating countryside and along enchanting coastal paths, the remarkable ruins of the Bronze Age village at Grimspound, the superb panoramic ridge views from Hameldown Tor, superb local walks to Haytor Rocks and Rippon Tor. Take a walk beside the Teign to Chagford or visit the Dart river valley, near Greenway House, the holiday home Agatha Christie's family



Harder Walks: 9 to 12½ miles, mostly over high moorland. Up to 2,100ft of ascent in a day.

Highlights include: The high moorland of Dartmoor, the last great wilderness area of southern England with a number of more challenging routes. Cross the wild northern moor to Yes Tor and High Willhays, the highest points in the national park. Follow part of the Devonport Leat as it meanders towards Princetown or head to the aptly named Wild Tor. Away from the moor enjoy longer walks in the Teign Valley and along the South Devon coast

Local transport: On some days the walks start and finish at our country house, Moorlands. On other days you'll be transported to other parts of Dartmoor and South Devon. The cost of all transport to and from the walks is included in the price of your holiday.

Other walking holidays – guided in small groups or self-guided with inn-to-inn luggage transfers & meals are available in many parts of the United Kingdom, Ireland & across Europe including Wainwright's famous **Coast-to-Coast** trail, Hadrian's Wall or walks in the Lake District. **St Cuthbert's Way** from Scotland into England, Ireland's **Ring of Kerry**, the **Dordogne** or **Pyrenees** in France, Austria, Spain or Italy.

Perhaps walk the Way of St James – the **Camino De Santiago** - from Le Puy to Santiago from France to Spain or the **Via Francigena** – the pilgrims Road to Rome.

Contact OUTDOOR TRAVEL or your travel agent for more details, brochures and reservations

- Call Outdoor Travel Toll free on 1800 331 582 or (03) 57551743 or Fax (03) 57501020
- Email info@outdoortravel.com.au
- Web: <http://www.outdoortravel.com.au>
- Mail: Outdoor Travel Pty Ltd, PO Box 286, Bright, VIC 3741, Australia
- Travel Agent Licence No 31102